

## A New Eclipsing Variable Near U Geminorum

[T. Sauer](#)

*Munich, Germany*

Received: 25.01.2010; accepted: 16.02.2010

(E-mail for contact: [ths12@t-online.de](mailto:ths12@t-online.de))

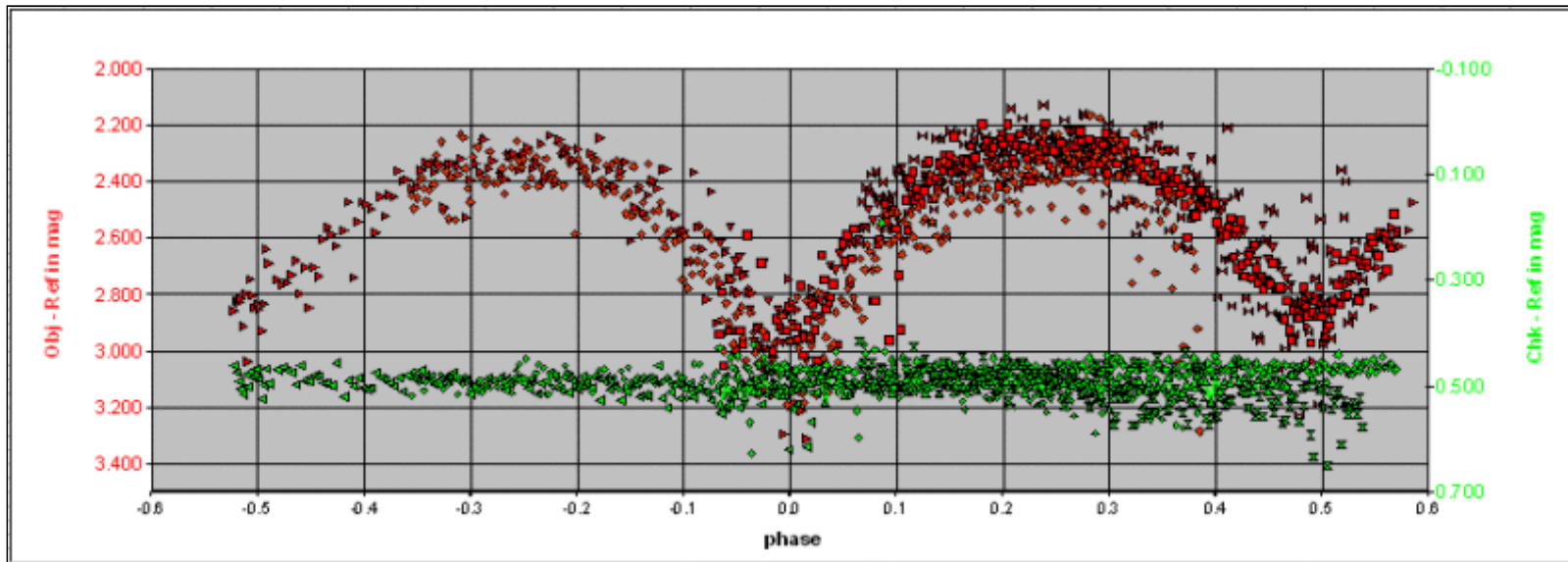
<b>Star Name:</b>	Raf V132
<b>Coordinates (J2000):</b>	07 52 57.30, +21 48 33.7
<b>Variability type:</b>	EW; <b>Limits, System:</b> 15.6 - 16.3;
<b>Period:</b>	0.339169 d; <b>Epoch(min):</b> JD 2454912.42422

### Remarks:

On February 3, 2009, U Geminorum was observed for several hours. We used a GSO-Newton 200/800 telescope with a SBIG ST10 camera installed near Munich. The exposure times for single images were 2 minutes. An L (IR-blocking) filter was applied. In these data, we found a new variable star, an EW eclipsing variable. We continued to observe it on March 21, April 13, April 15, and April 21, with exposure times of 1 min. On January 19, 2010, this star was observed again in the north of Austria with a Carbon-Newton (InterconSpacetec) 200/800 telescope and a SBIG ST10 camera, also with 1-minute exposures and the same L filter. Dark and flat field reductions were performed by CCDSoft and photometry, by MaximDL.

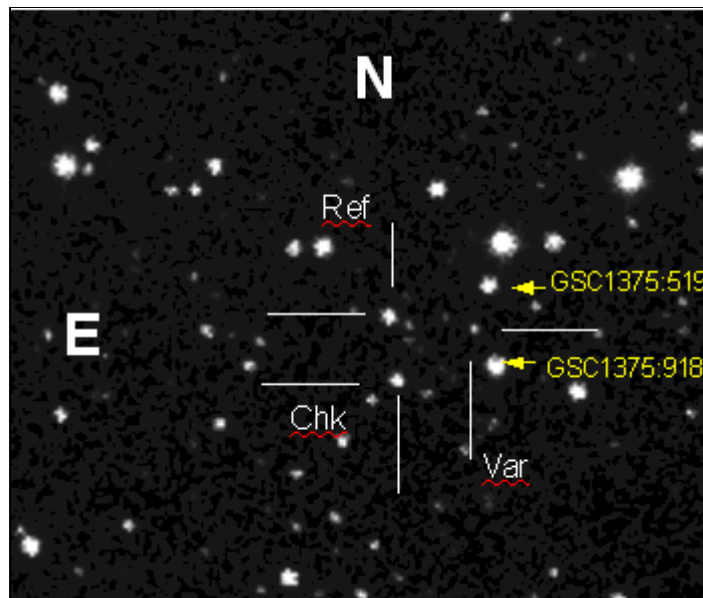
MinII = 16.2.

### Light Curve



Top: the light curves of the new variable (left scale applies). Bottom: the light curves of the check star (right scale applies). All observations were folded with the tabulated period.

### Finding Chart



Size: 13.2' x 11.2'. Reference star = GSC 1375-00619, brightness = 13.3 mag. Check star = GSC 1375-00253, brightness = 13.9 mag.

### Data Source

1. [data\\_ew\\_at\\_gsc1375\\_519\\_918.txt](#)