

GSC 3950-00707: A New Eclipsing Variable

[A. Devlen](#)

Ege University, Dept. of Astronomy and Space Sciences, Bornova, Izmir, Turkey

Received: 16.06.2009; accepted: 25.06.2009

(E-mail for contact: ahmet.devlen@ege.edu.tr)

Star Name:	GSC 3950-00707, USNO-B1.0 1427-0429378
Coordinates (J2000):	20 35 50.83, +52 42 13.6
Variability type:	EW; Limits, System: 13.28-13.7 (V);
Period:	0.4120 d; Epoch(min): JD 2454232.5278

Remarks:

I presented my discovery of a new eclipsing variable star GSC 3950-00707. This study is based on CCD observations carried out at the Ege University Observatory using a Meade LX200GPS 16" Schmidt-Cassegrain telescope equipped with an Alta Apogee U42 CCD Camera (2048x2048 pixels) and a V filter. The variable was discovered on May 11, 2007, its observations were continued on 5 nights in June 2007. GSC 3950-00707 is a newly discovered eclipsing variable star, classified as an EW variable. GSC 3950-00599 was used as a comparison star, and the star USNO-B1.0 1427-0429472 was used as a check star. It has been checked through the SIMBAD and the electronic GCVS that they are not known as variable stars. IRAF packages were used for reductions and aperture photometry. Minima were derived using the method by Kwee and van Worden (1956). GSC 3950-00707 is an EW eclipsing binary with the following elements:

Min I (HJD) = $24\ 54232.5278(\pm 0.0004) + 0.4120(\pm 0.0001) \times E$.

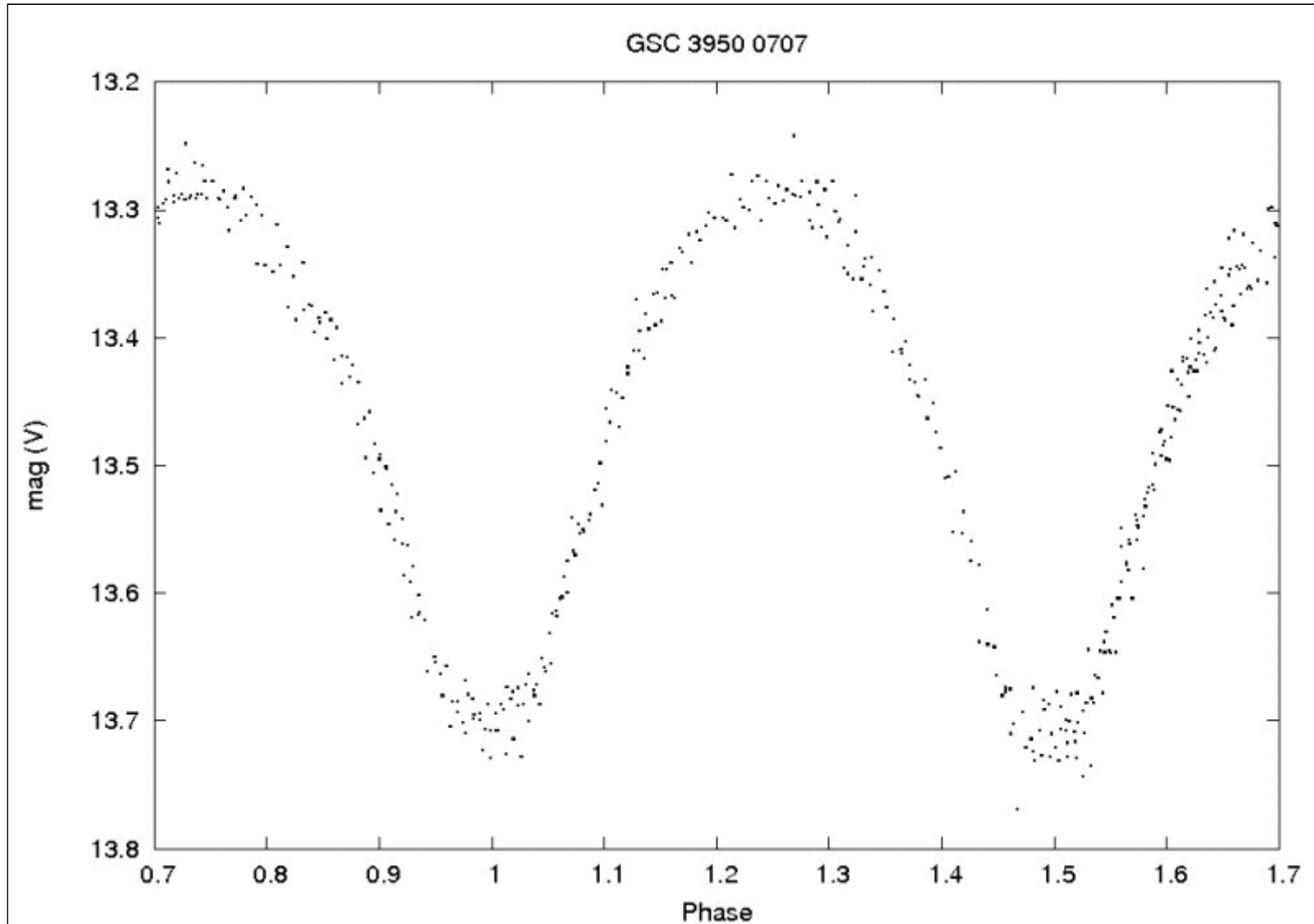
Min II = 13.7.

Acknowledgments: This research has made use of SIMBAD database, operated at CDS, Strasbourg, France and electronic GCVS at Sternberg Astronomical Institute, Moscow, Russia.

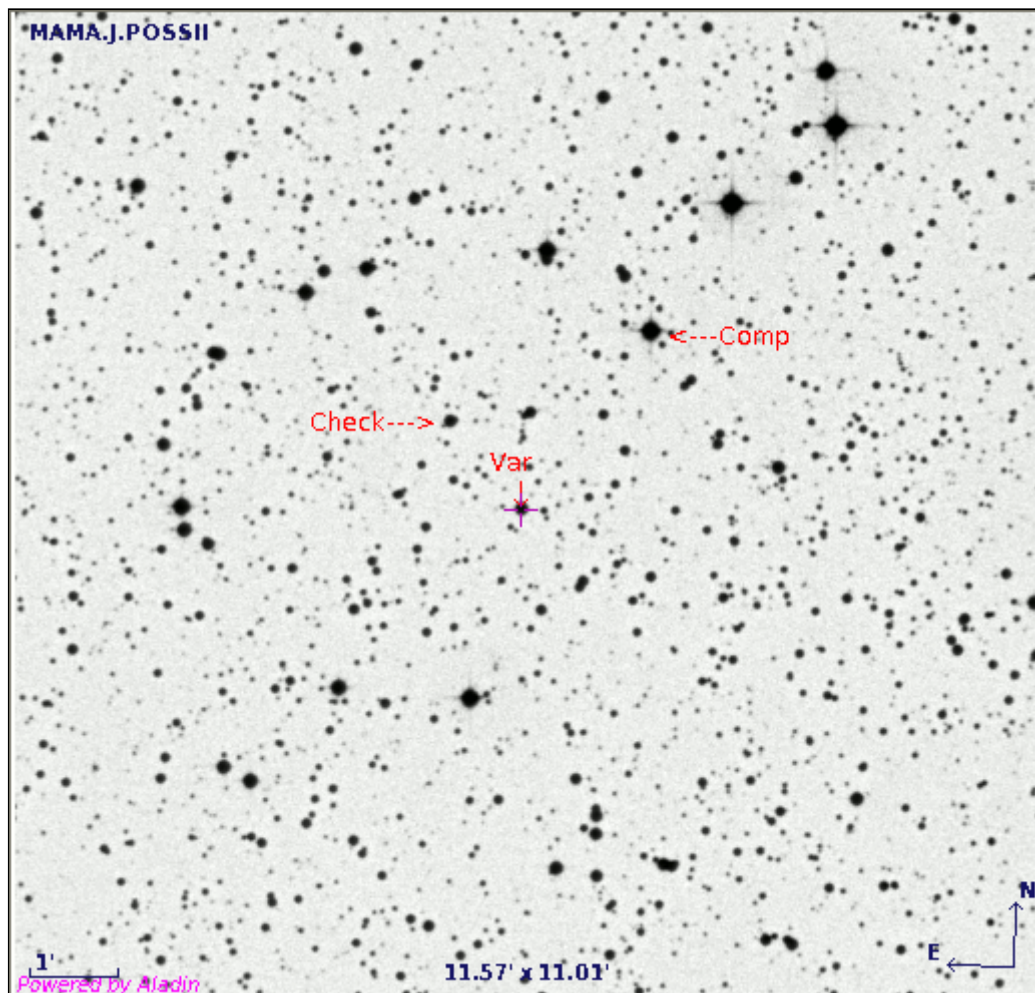
References:

Bonnarel, F., Fernique, P., Bienaymé, O., et al., 2000, *Astron. and Astrophys. Suppl.*, 143, 33
Kwee, K.K., van Woerden, H., 1956, *BAN*, 12, 327

Light Curve



Finding Chart



The finding chart (Bonnarel et al. 2000).

Data Source

1. [gsc3950_707.txt](#)