

## The New Variable Star GSC 05236-00391

[S. Bakan](#)

*Wedel, Schleswig-Holstein, Germany; Bundesdeutsche Arbeitsgemeinschaft fuer Veraenderliche Sterne (BAV), Berlin, Germany*

Received: 3.02.2009; accepted: 19.02.2009

(E-mail for contact: [stephan.bakan@t-online.de](mailto:stephan.bakan@t-online.de))

---

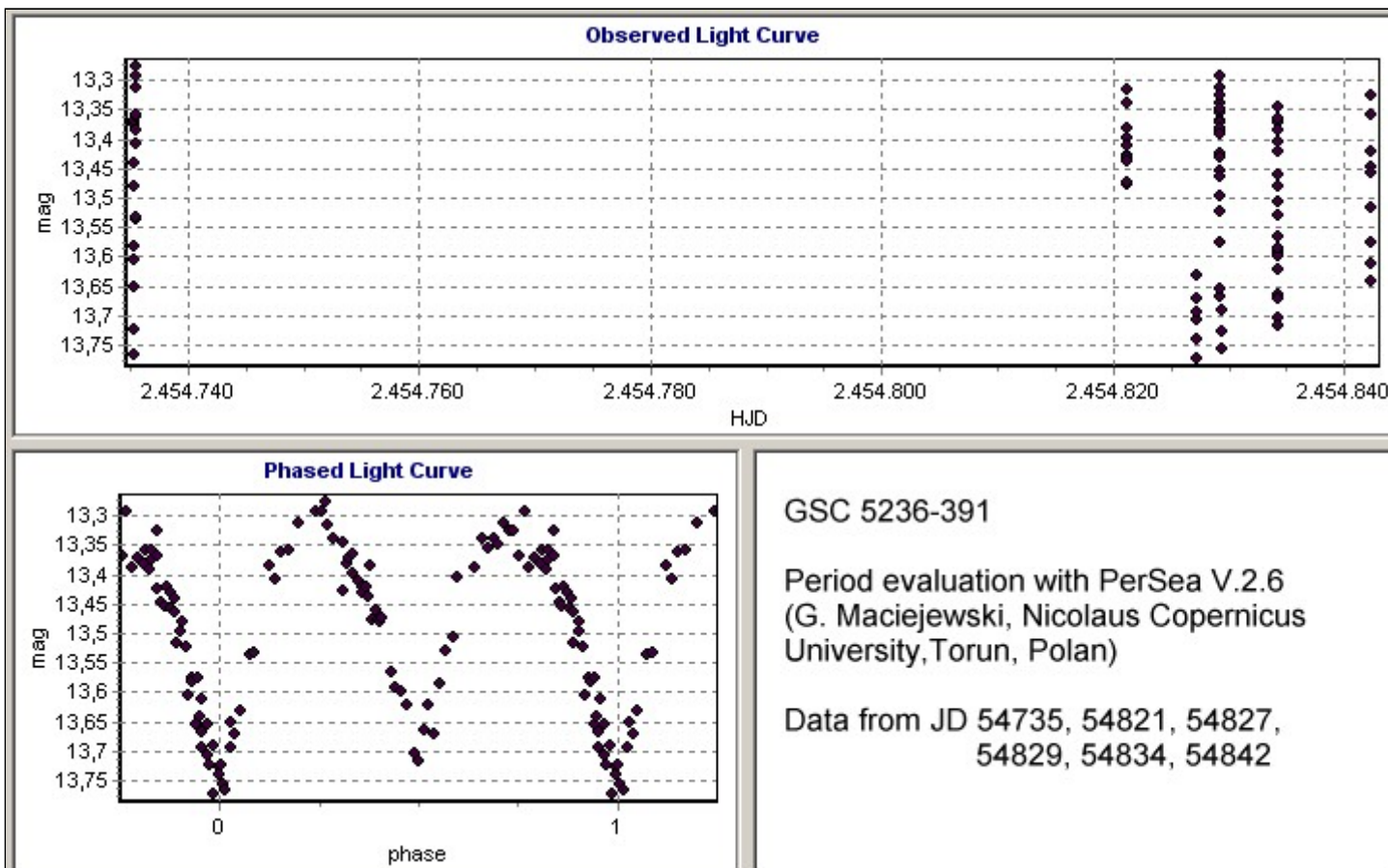
<b>Star Name:</b>	GSC 05236-00391, USNO-B1.0 0863-0590591
<b>Coordinates (J2000):</b>	22 33 46.31, -03 39 26.6
<b>Variability type:</b>	EW; <b>Limits, System:</b> 13.29-13.71 (V);
<b>Period:</b>	0.341550 d; <b>Epoch(min):</b> JD 2454735.723

### Remarks:

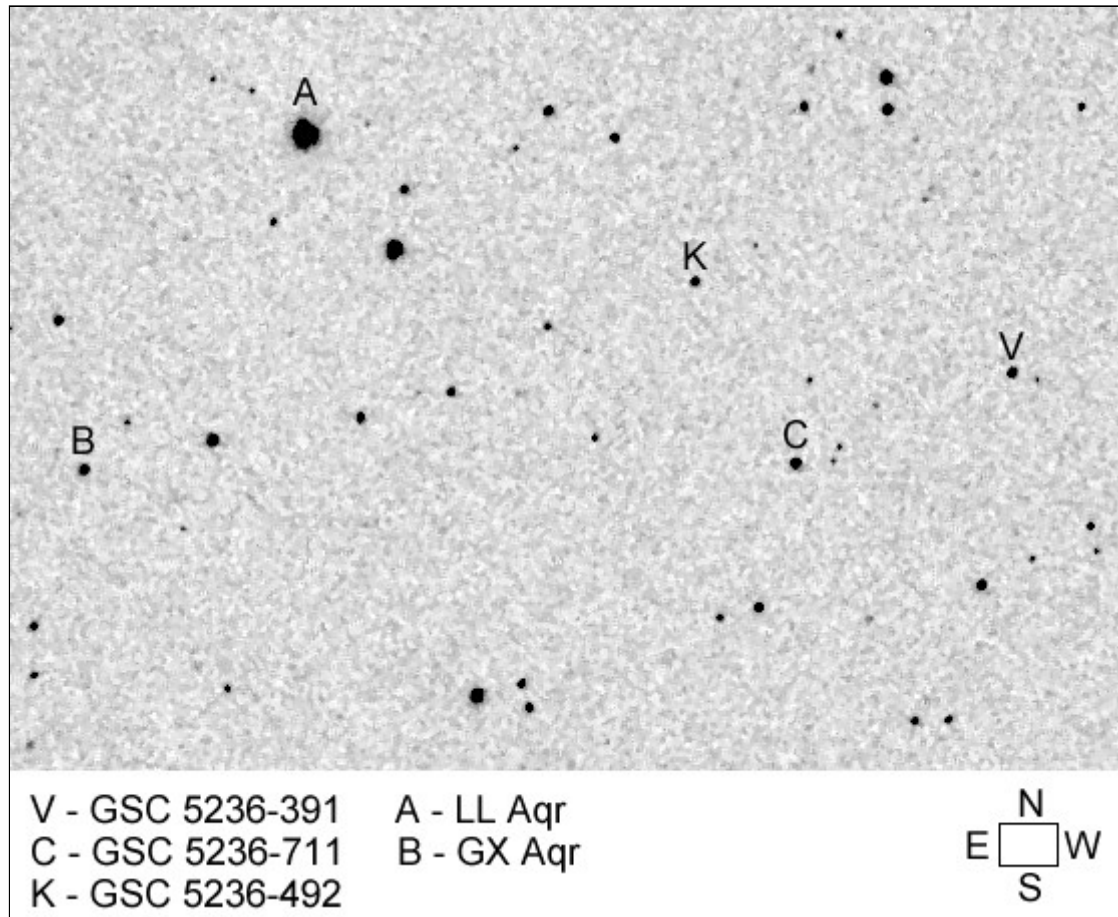
While observing LL Aqr, the variability of GSC 05236-00391 was recognized. The presented results are based on observations from 6 nights between 25 September 2008 and 10 January 2009, performed with a Schmidt-Newton 6" telescope and a Meade DSIProII CCD camera, through a Schuler V filter. The comparison star was GSC 05236-00711; GSC 05236-00492 was used as a check star. Our provisional analysis of this star in the NSVS (ROTSE-I) and ASAS-3 sky surveys resulted in very similar light elements.

MinII = 13.71.

### Light Curve



Finding Chart



**Data Source**

1. [gsc0523600391\\_datafile.txt](#)