

# TYC 2298 01538 1

[A. V. Khruslov](#)  
*Russia, Tula*

Received: 9.02.2008; accepted: 11.02.2008  
(E-mail for contact: [khruslov@bk.ru](mailto:khruslov@bk.ru))

<b>Star Name:</b>	TYC 2298 01538 1, NSVS 6471492	
<b>Coordinates (J2000):</b>	01 44 47.59, +32 32 59.9	
<b>Variability type:</b>	CV;	<b>Limits, System:</b> 12.0 - 12.6 (R);
<b>Period:</b>	<b>Epoch:</b>	JD

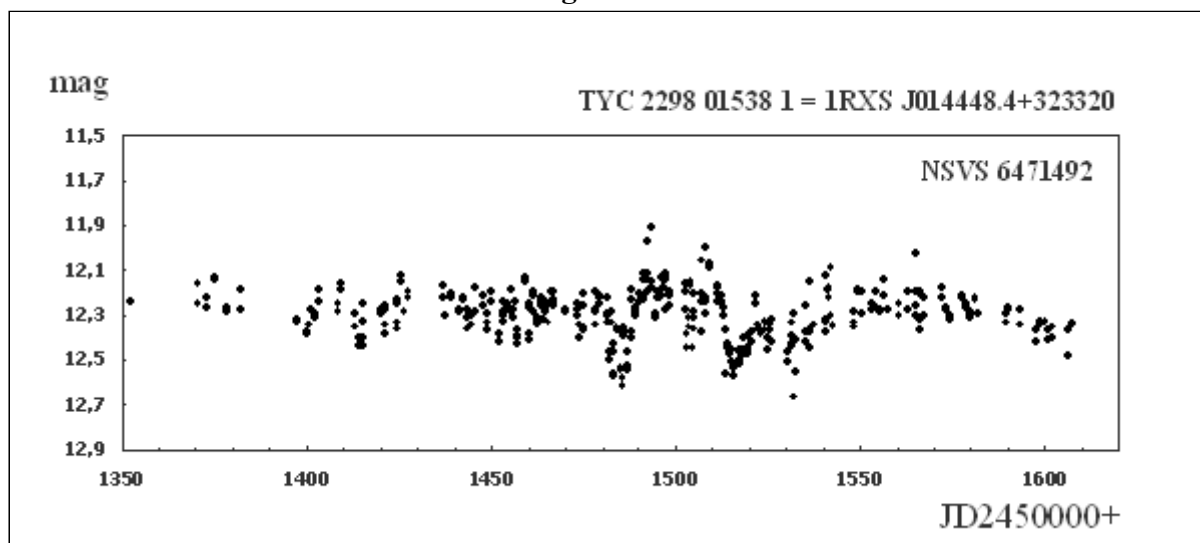
## Remarks:

TYC 2298 01538 1 is a new probably cataclismic variable star according to ROTSE1 data. B-V = -0.100 (Tyc2), J-H=0.036 (2MASS). X-ray source 1RXS J014448.4+323320 .

## References:

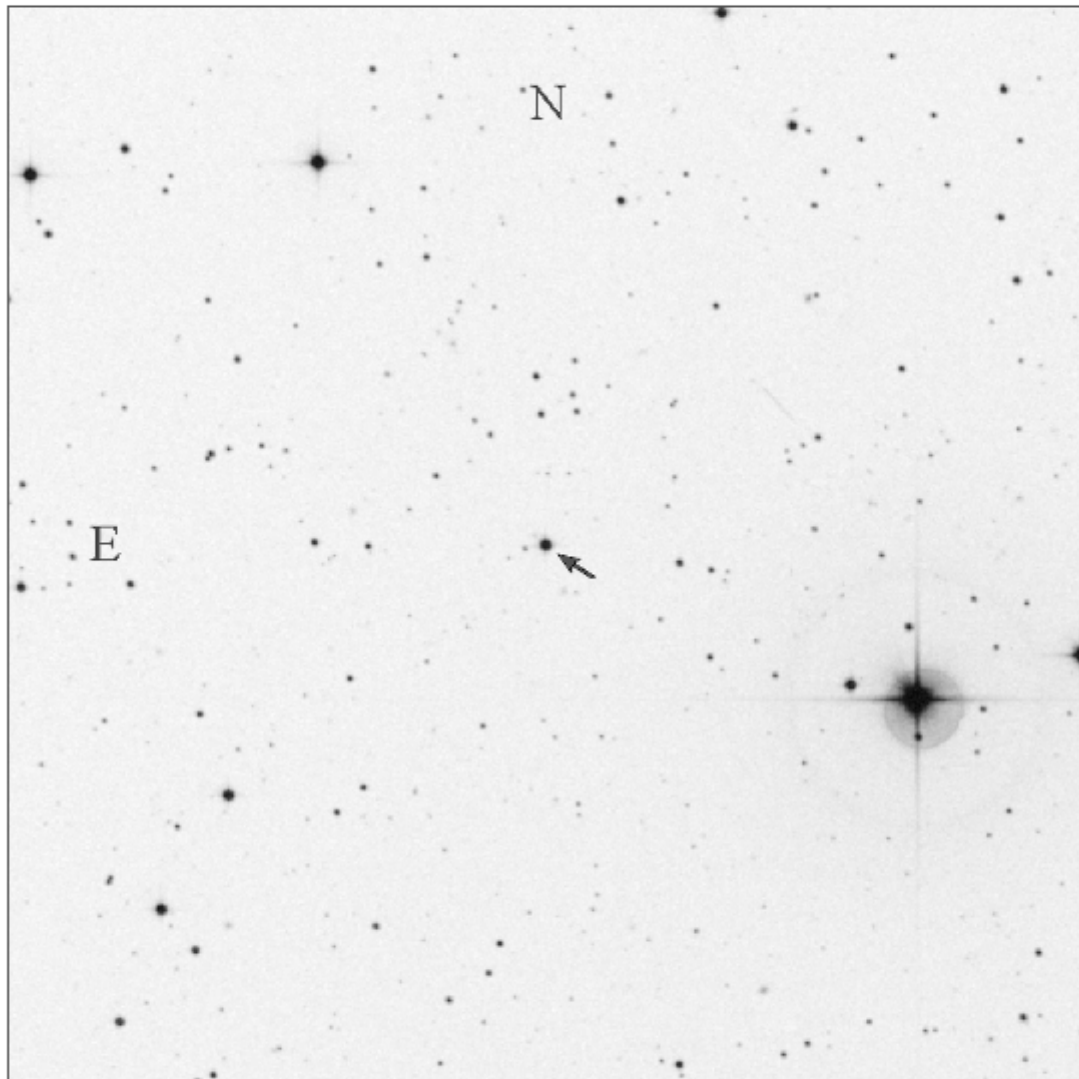
Wozniak, P.R., Vestrand, W.T., Akerlof, C.W. et al., 2004, Astron. J., 127, 2436

## Light Curve



Finding Chart

TYC 2298 01538 1



POSS II red

15'x 15'