

NSV 14523 is an RRAB Variable

[T. Kryachko](#)^{#1}, [B. Satovskiy](#)^{#1}, [K. V. Sokolovsky](#)^{#2,3}

#1 Astrotel Observatory, Karachay-Cherkessia, Russia;

#2 Astro Space Center, Lebedev Physical Institute, Russian Academy of Sciences;

#3 Sternberg Astronomical Institute, Moscow State University

Received: 27.01.2008; accepted: 8.02.2008

(E-mail for contact: ldkfa@sai.msu.ru)

Star Name:	NSV 14523, USNO-B1.0 0964-0599429
Coordinates (J2000):	23 22 01.45, +06 24 42.2
Variability type:	RRAB; Limits, System: 15.7-17.0 (red);
Period:	0.48186 d; Epoch(max): JD 2454459.263

Remarks:

The variable star NSV 14523 was discovered by Pinto & Romano (1973) who gave very rough coordinates but published a finding chart. It can be identified with USNO-B1.0 0964-0599429. The star may be identical to the object PB 5349 in the catalog of faint blue stars at high galactic latitudes (Berger & Fringant, 1980). Pinto & Romano believed the star to be a peculiar object: though they derived a period of 0.48176 days, the light curve from a small number of photographs demonstrated a large scatter and discrepancies.

We observed the star with the Astrotel-Caucasus robotic telescope (D=300 mm, F=2310 mm) equipped with an unfiltered STL-11000M CCD camera. USNO-B1.0 0963-0597131 (R1mag=16.65, R2mag=16.24) and USNO-B1.0 0964-0599360 (R1mag=15.82, R2mag=15.54) were respectively the comparison and check stars. Our observations allow us beyond doubt to classify NSV 14523 as an RRAB star with the following light elements:

$$\text{HJDmax} = 2454459.263 + 0.48186 \times E.$$

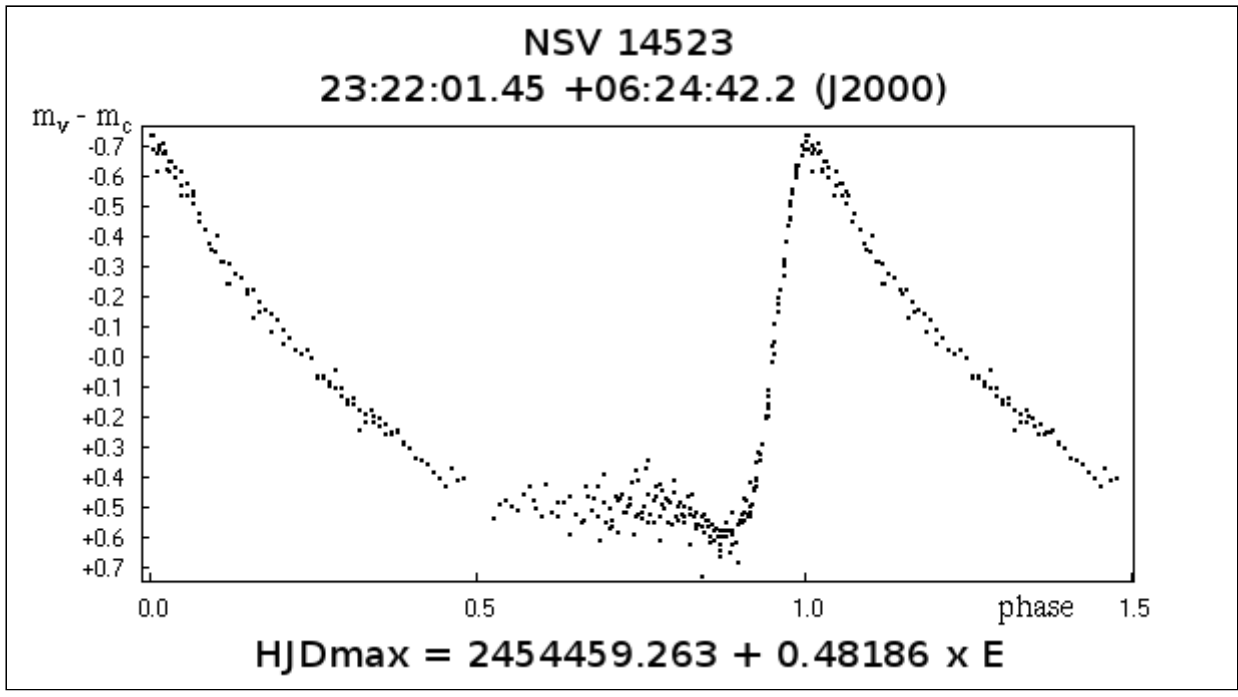
Acknowledgments: This research has made use of [Aladin Sky Atlas](#), operated at CDS, Strasbourg, France. The authors are grateful to V.P. Goranskij for providing software used for our light-curve analysis.

References:

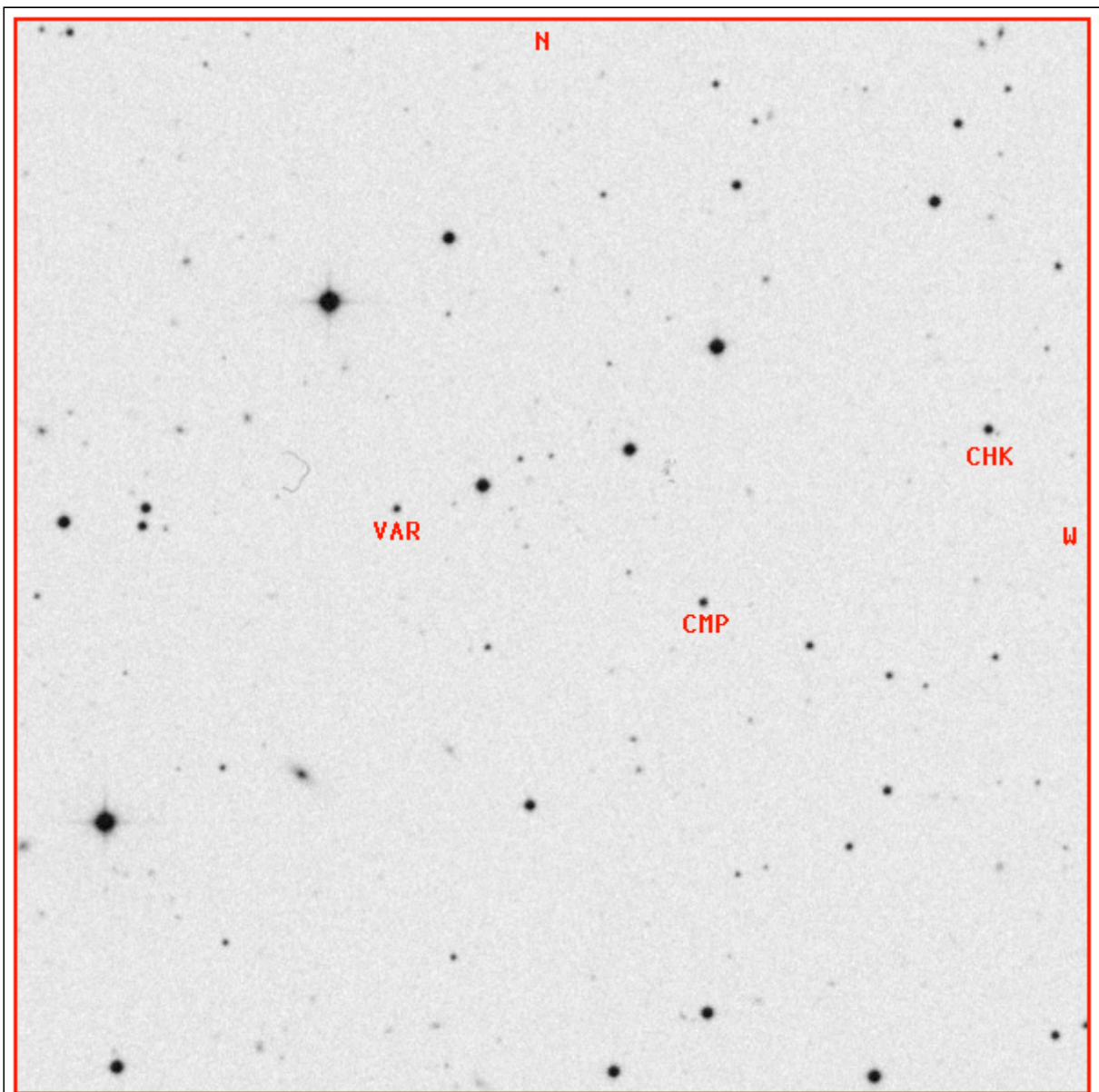
Berger, J., Fringant, A.M., 1980, A&AS, 39, 39

Pinto, G., Romano, G., 1973, Memor. Soc. Astron. Ital., 44, 273

Light Curve



Finding Chart



10' x 10'

DSS2 red

J2000

VAR = USNO-B1.0 0964-0599429

23:22:01.45 +06:24:42.2

CMP = USNO-B1.0 0963-0597131

23:21:49.93 +06:23:49.6

CHK = USNO-B1.0 0964-0599360

23:21:39.18 +06:25:26.0

Data Source

1. [nsv14523hjd.dat](#)