

# TYC 3466 00629 1

[A. V. Khruslov](#)  
*Russia, Tula*

Received: 15.11.2006; accepted: 23.11.2006  
(E-mail for contact: [khruslov@bk.ru](mailto:khruslov@bk.ru))

---

<b>Star Name:</b>	TYC 3466 00629 1, NSVS 5071687, 1RXS J133535.4+491426		
<b>Coordinates (J2000):</b>	13 35 38.39, +49 14 06.2		
<b>Variability type:</b>	EW;	<b>Limits, System:</b>	10.93 - 11.21 (R);
<b>Period:</b>	0.293825 d;	<b>Epoch(min):</b>	JD 2451420.700

## Remarks:

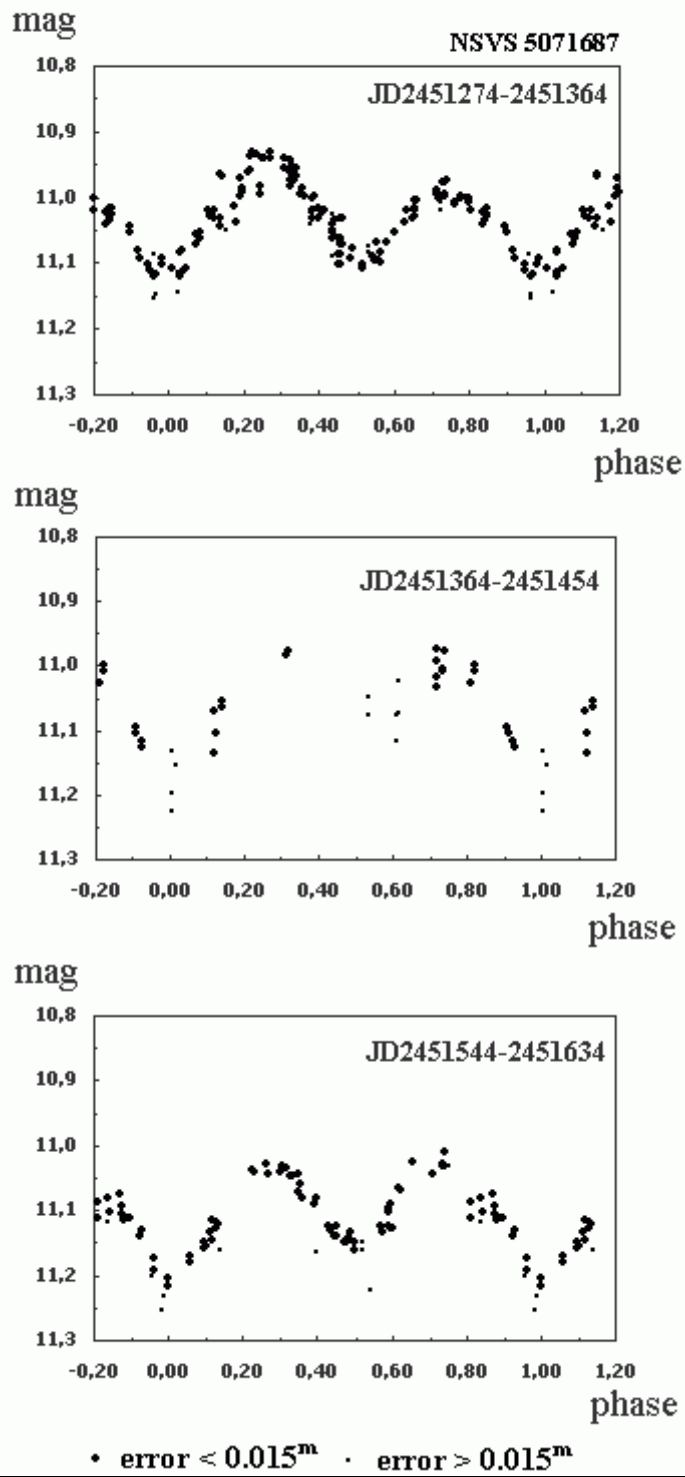
TYC 3466 00629 1 is a W UMa eclipsing binary according to ROTSE-I data (Wozniak et al., 2004).  
The system's mean brightness varies.

## References:

Wozniak, P.R., Vestrand, W.T., Akerlof, C.W. et al., 2004, Astron. J., 127, 2436

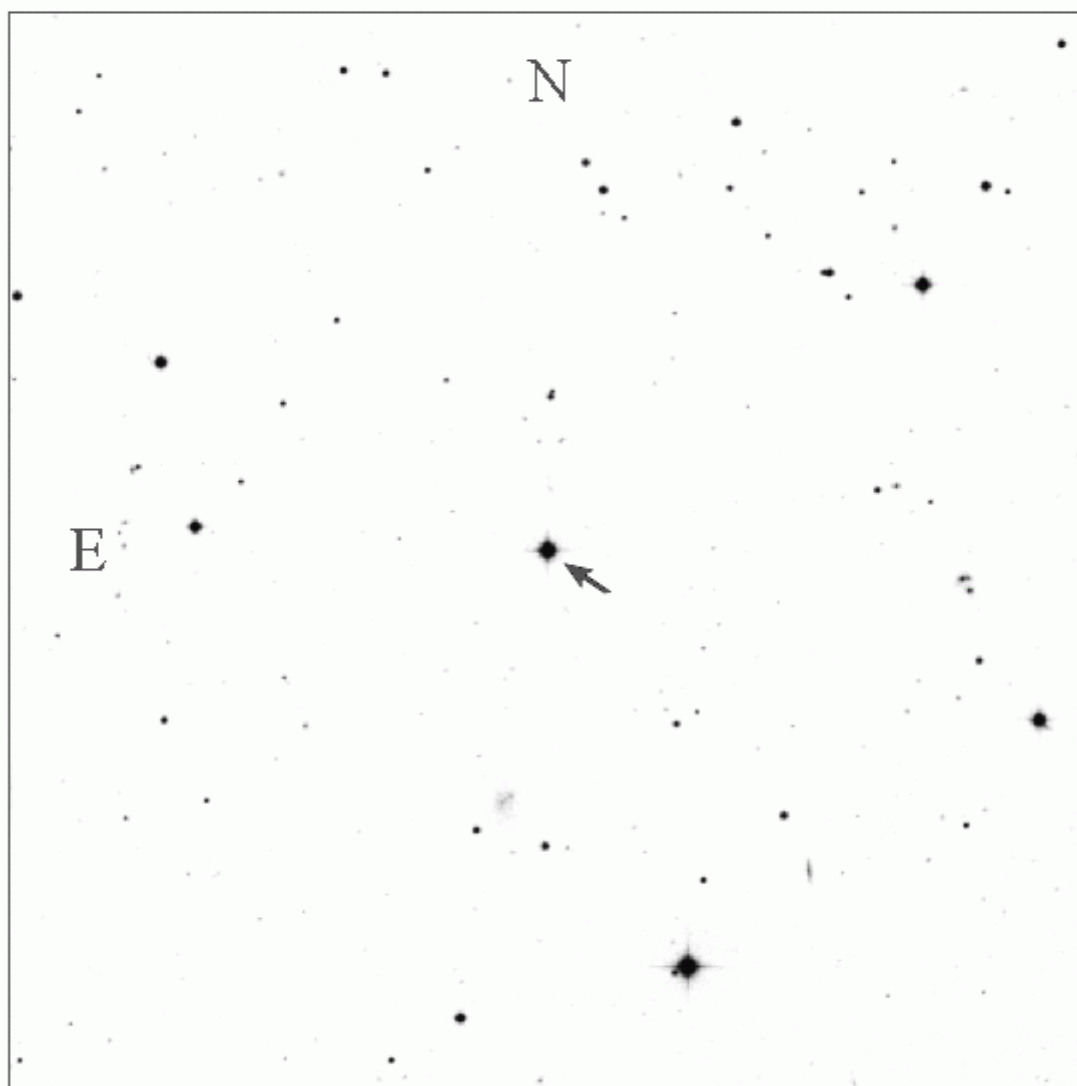
## Light Curve

TYC 3466 00629 1  
EW P=0<sup>d</sup>.293825



Finding Chart

TYC 3466 00629 1



Poss II red

15'x 15'