

HU Camelopardalis

[A. V. Khruslov](#), [S. V. Antipin](#), [K. V. Sokolovsky](#)

(1)Tula, Russia; (2)Sternberg Astronomical Institute and Institute of Astronomy, Russian Academy of Sciences, Moscow, Russia; (3)Sternberg Astronomical Institute and Astro Space Center of the Lebedev Physical Institute, Russian Academy of Sciences, Moscow, Russia.

Received: 13.10.2006; accepted: 30.10.2006

(E-mail for contact: khruslov@bk.ru)

Star Name:	HU Cam, NSV 03881, GSC 4540-02678, NSVS 716909, NSVS 744564		
Coordinates (J2000):	08 07 39.95, +76 22 48.9		
Variability type:	RRAB;	Limits, System:	13.8 - 14.15 (R);
Period:	0.614063 d;	Epoch(max):	JD 2450489.5954

Remarks:

This variable was discovered by Baker (1937). The star, now known as GSC 4540-02678, is marked as a variable on the finding chart given in his paper. Later, HU Cam was observed by Garcia-Melendo (1998), who classified the variable as an RRAB type star ($P = 0.615$ days) but identified it with another GSC object (GSC 4540-02590). The author claims that he used GSC 4540-02396 and GSC 4540-02678 as comparison and check stars respectively.

We investigated HU Cam using the ROTSE-I data (Wozniak et al., 2004) and found that the variable was GSC 4540-02678 (in fact, the blended image of two stars: GSC 4540-02678 and GSC 4540-2396). Moreover, to solve the problem ones and for all, we undertook additional CCD observations at the telescopes of the Crimean Laboratory (Sternberg Astronomical Institute). Our observations confirmed the variability of the star marked as variable on the Baker's finding chart (GSC 4540-02678) with the Garcia-Melendo's period. GSC 4540-02590 that was considered the variable by Garcia-Melendo is not variable in our data. We determined the light elements more accurately based on all available data (Garcia-Melendo's photometry, NSVS data and our CCD observations). The coordinates are from the 2MASS catalog.

References:

Baker, E.A., 1937, MNRAS, 98, 65

Garcia-Melendo, E., 1998, IBVS, No. 4583

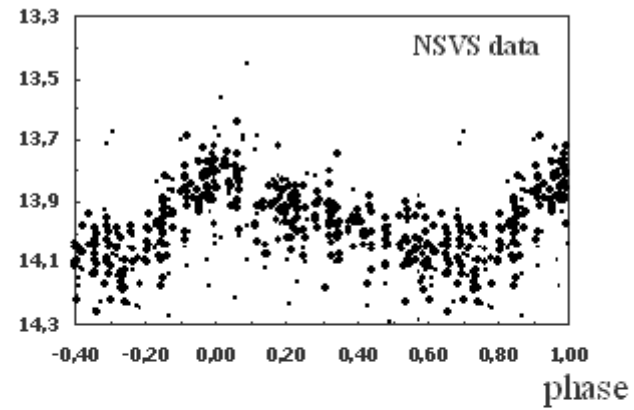
Wozniak, P.R., Vestrand, W.T., Akerlof, C.W. et al., 2004, AJ, 127, 2436

Light Curve

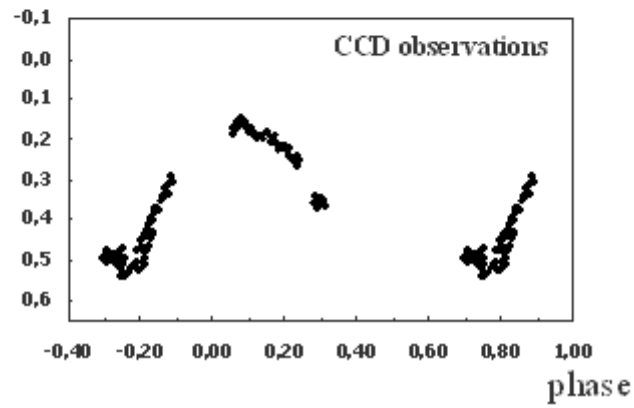
HU Cam RRAB

$P=0^d.614063$

mag

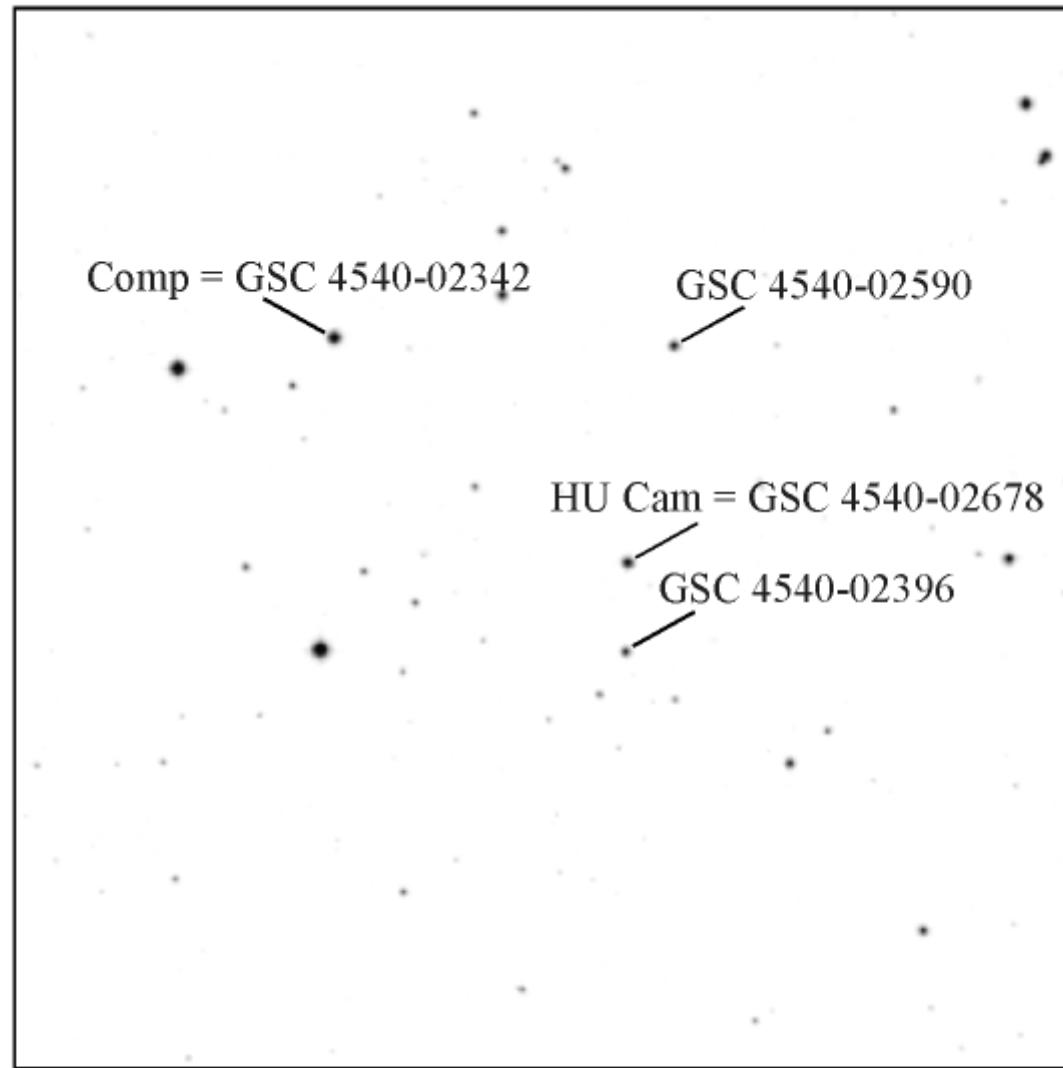


delta V



Finding Chart

HU Cam



POSS II red

10'x10'

Data Source

1. [hu_cam_ccd.dat](#)