

TYC 3706 00485 1

[A. V. Khruslov](#)

Russia, Tula

Received: 15.10.2006; accepted: 17.10.2006

(E-mail for contact: khruslov@bk.ru)

Star Name:	TYC 3706 00485 1, NSVS 1955595
Coordinates (J2000):	03 18 48.06, +55 40 11.9
Variability type:	RV: ; Limits, System: 10.8 - 11.2 (R);
Period:	69.7 d; Epoch(min): JD 2451501.2

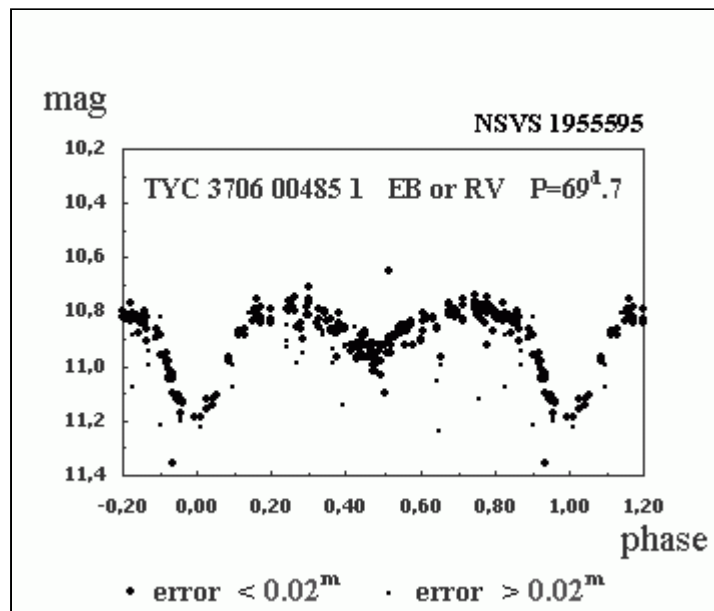
Remarks:

TYC 3706 00485 1 is an RV: type variable star according to ROTSE-I data (Wozniak et al., 2004). The type EB cannot be completely excluded, though seems improbable. MinII = 10.95, MinII at phase 0,48:P, B-V = 1.11 (according to Tycho-2 catalog), $b = -1.4$ deg. The ROTSE data with photometric correction flags (usually rejected) were kept for the the analysis. In the case of TYC 3706 00485 1, the use of these data considerably increases the number of available observations without deteriorating quality and allows us to determine the period more accurately.

References:

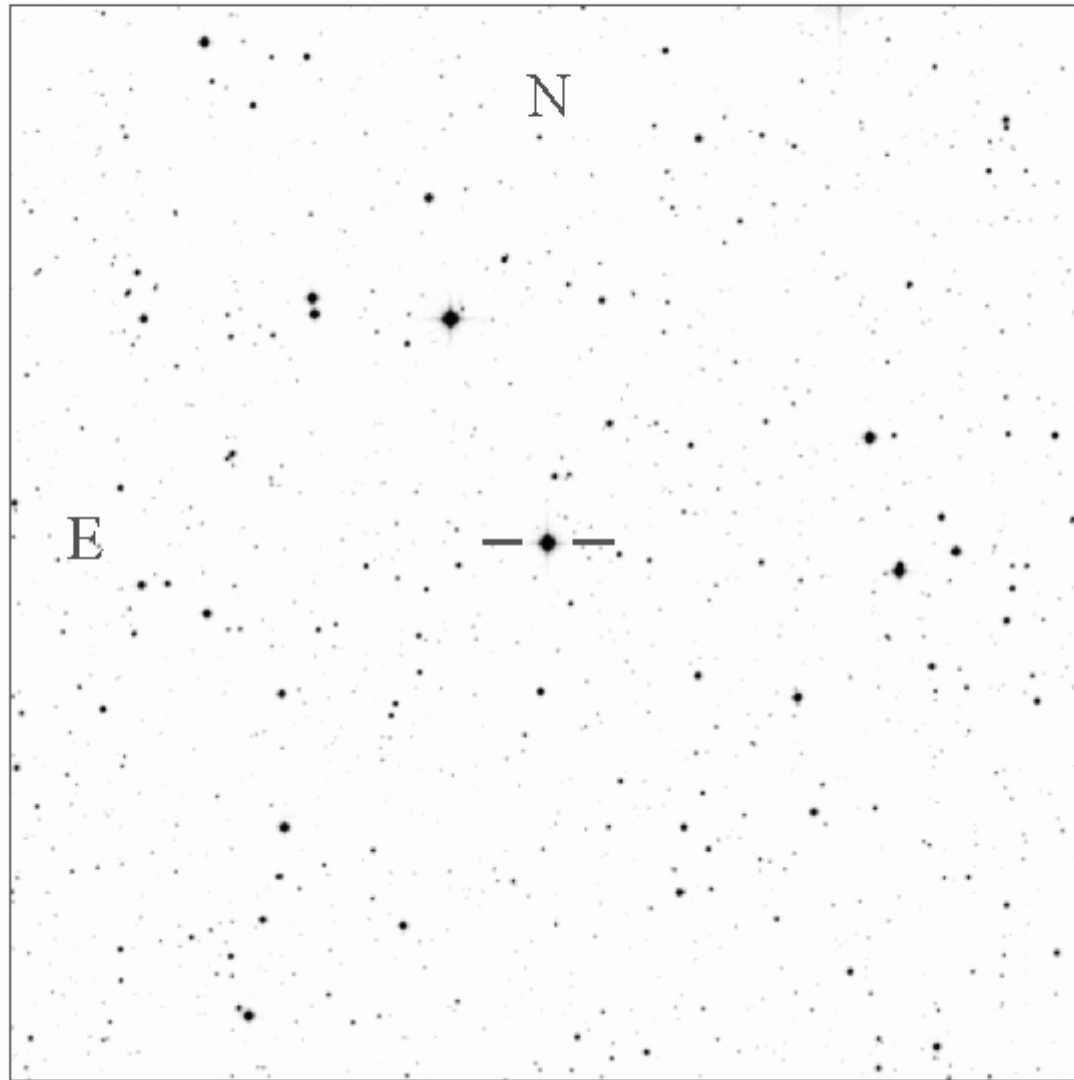
Wozniak, P.R., Vestrand, W.T., Akerlof, C.W. et al., 2004, Astron. J., 127, 2436

Light Curve



Finding Chart

TYC 3706 00485 1



Poss II red

15' x 15'