

TYC 3492 01272 1

[A. V. Khruslov](#)
Russia, Tula

Received: 7.07.2006; accepted: 7.09.2006
(E-mail for contact: khruslov@bk.ru)

Star Name:	TYC 3492 01272 1, NSVS 5218576, NSVS 5239679, RX J1624.1+4555		
Coordinates (J2000):	16 24 10.44, +45 55 26.8		
Variability type:	EW;	Limits, System:	9.95 - 10.4 (R);
Period:	0.265629 d;	Epoch(min):	JD 2451383.737

Remarks:

TYC 3492 01272 1 is a new W UMa eclipsing binary according to NSVS data and our visual observations (232 visual estimates, JD2453841-53974; telescope: 15-cm reflector; one comparison star TYC 3492 00238 1). MinII = 10.35 (R). The ROTSE data with photometric correction flags (usually rejected) were kept for the analysis. In the case of TYC 3492 01272 1, the use of these data considerably increases the number of available observations without deteriorating quality and allows us to determine the period more accurately. The identification of TYC 3492 01272 1 with BD+46 2173 in the Simbad database seems to be erroneous.

References:

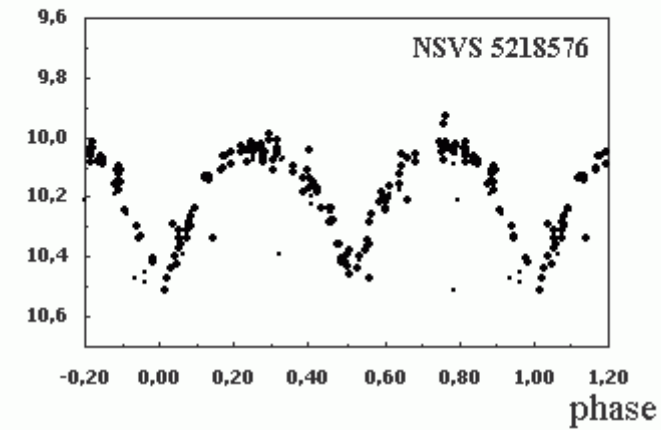
Wozniak, P.R., Vestrand, W.T., Akerlof, C.W. et al., 2004, Astron. J., 127, 2436

Light Curve

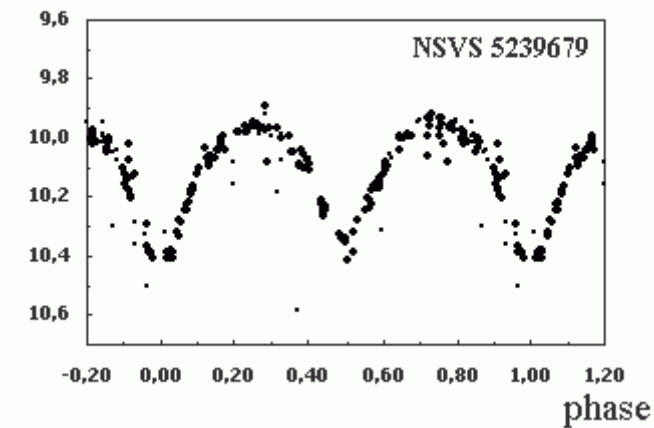
TYC 3492 01272 1

EW P=0^d.265629

mag

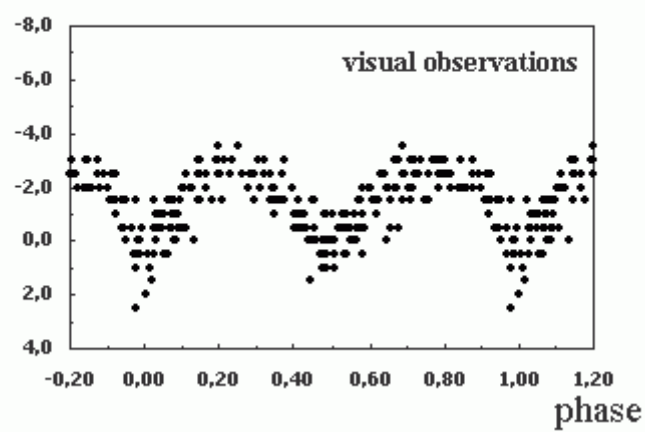


mag



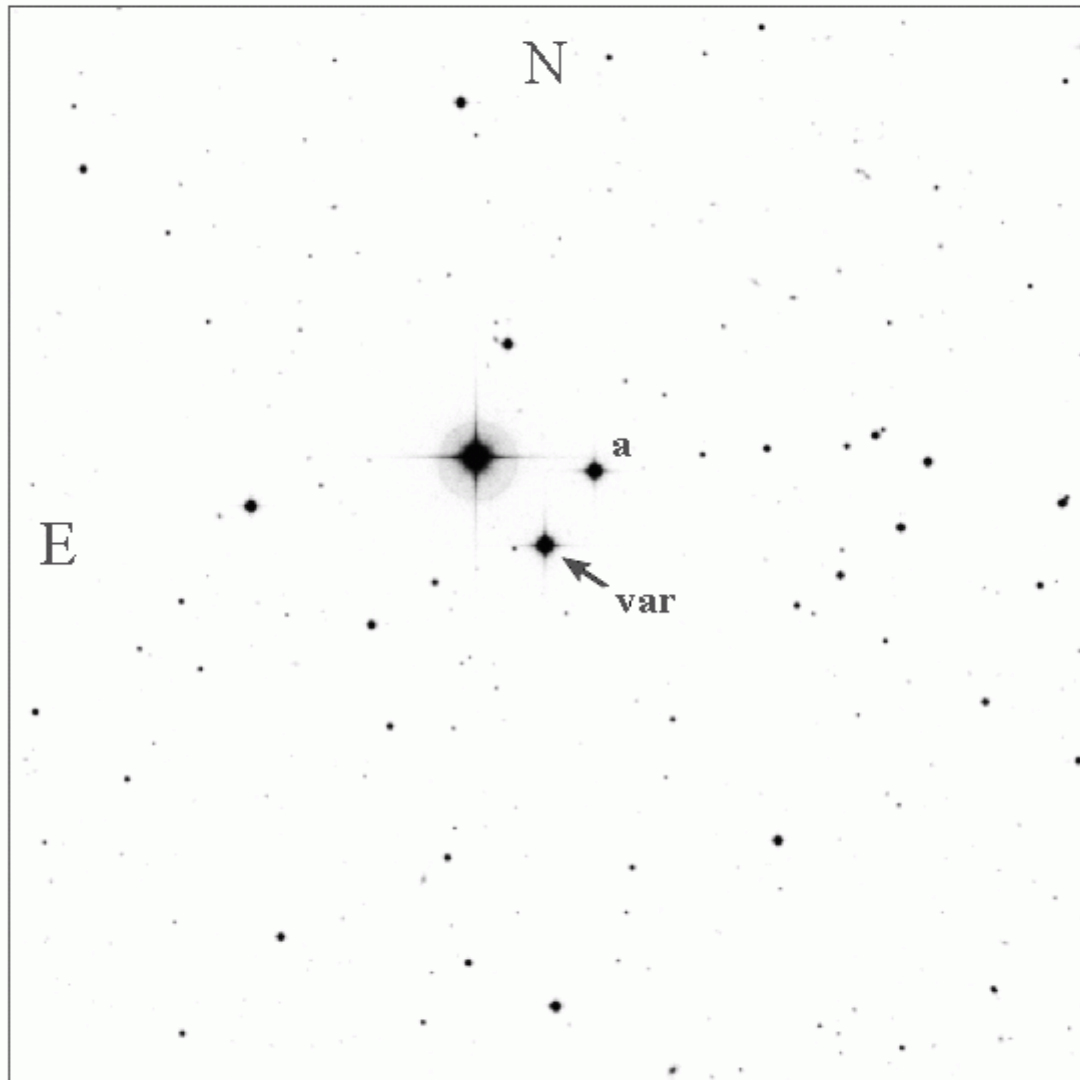
• error < 0.015^m • error > 0.015^m

st



Finding Chart

TYC 3492 01272 1



Poss II red

15'x 15'

Finding chart. Comparison star (TYC 3492 00238 1) is marked as "a".

Data Source

1. [data](#)