

## GSC 3497-00323, a New CWB Star

[A. V. Khruslov](#)

*Russia, Tula*

Received: 28.12.2005; accepted: 13.04.2006

(E-mail for contact: [khruslov@bk.ru](mailto:khruslov@bk.ru))

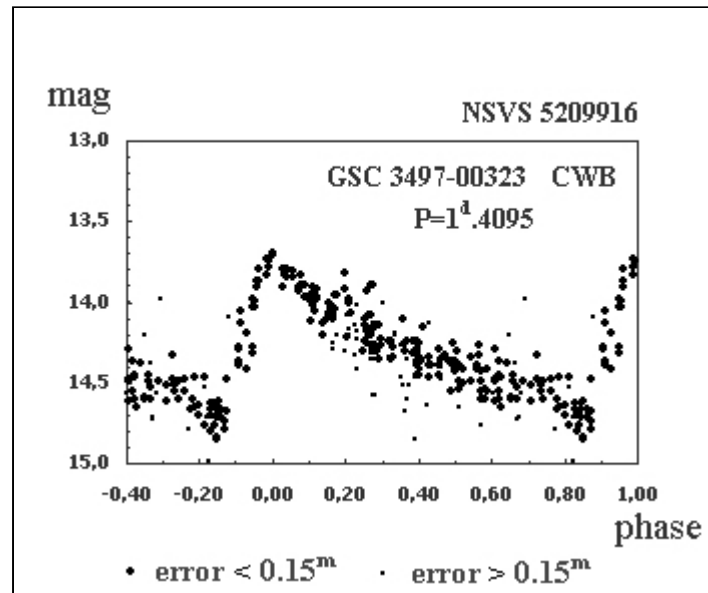
---

<b>Star Name:</b>	GSC 3497-00323, NSVS 5209916
<b>Coordinates (J2000):</b>	16 03 43.36, +50 13 33.4
<b>Variability type:</b>	CWB; <b>Limits, System:</b> 13.7 - 14.8 (R);
<b>Period:</b>	1.4095 d; <b>Epoch(max):</b> JD 2451400.10

### Remarks:

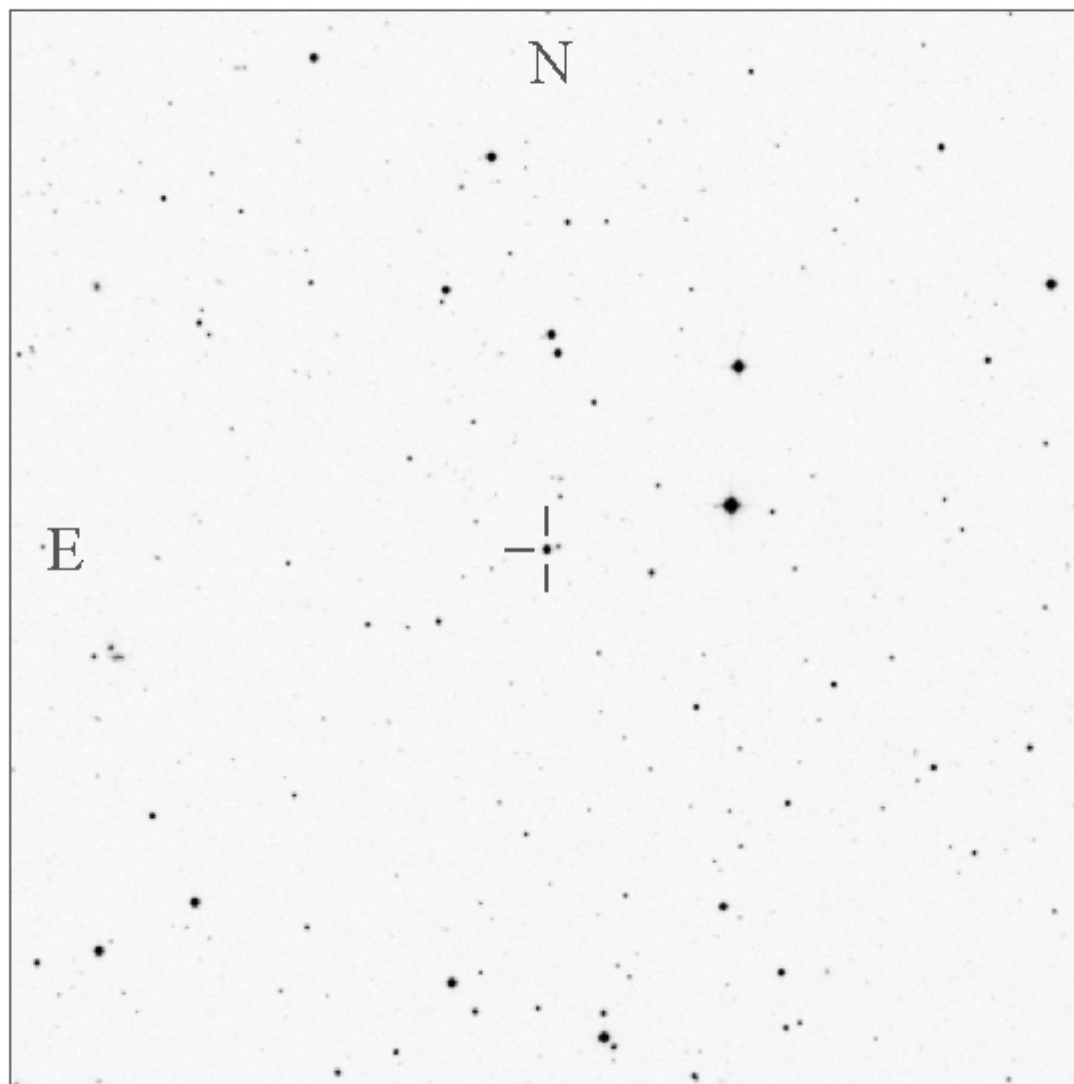
GSC 3497-00323 is a new CWB star according to ROTSE1 data,  $M-m = 0.15$  P,  $b = +47.0$  deg.

### Light Curve



Finding Chart

GSC 3497-00323



Poss II red

15' x 15'