

GSC2.2 N312200217126, a New Classical Cepheid

[A. V. Khruslov](#)

Russia, Tula

Received: 23.11.2005; accepted: 2.12.2005

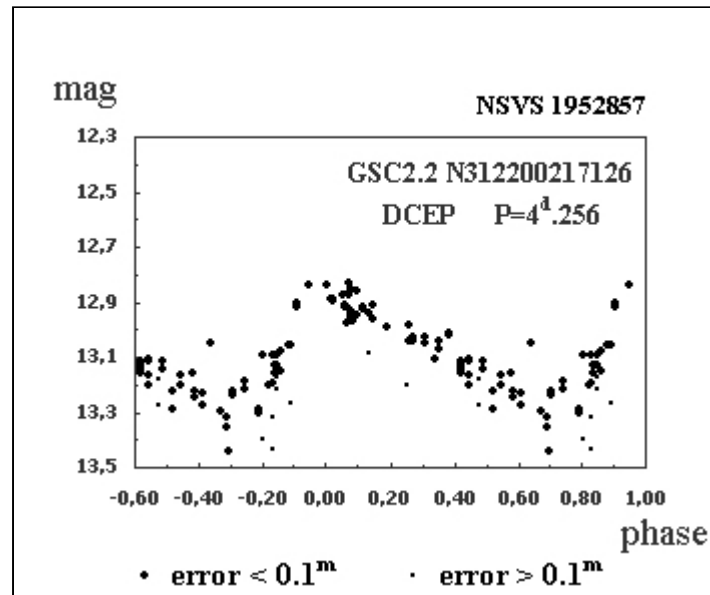
(E-mail for contact: khruslov@bk.ru)

Star Name:	GSC2.2 N312200217126, USNO-A2.0 1425-04231555, NSVS 1952857		
Coordinates (J2000):	03 15 05.82, +56 12 45.2		
Variability type:	DCEP;	Limits, System:	12.8 - 13.3 (R);
Period:	4.256 d;	Epoch(max):	JD 2451449.5

Remarks:

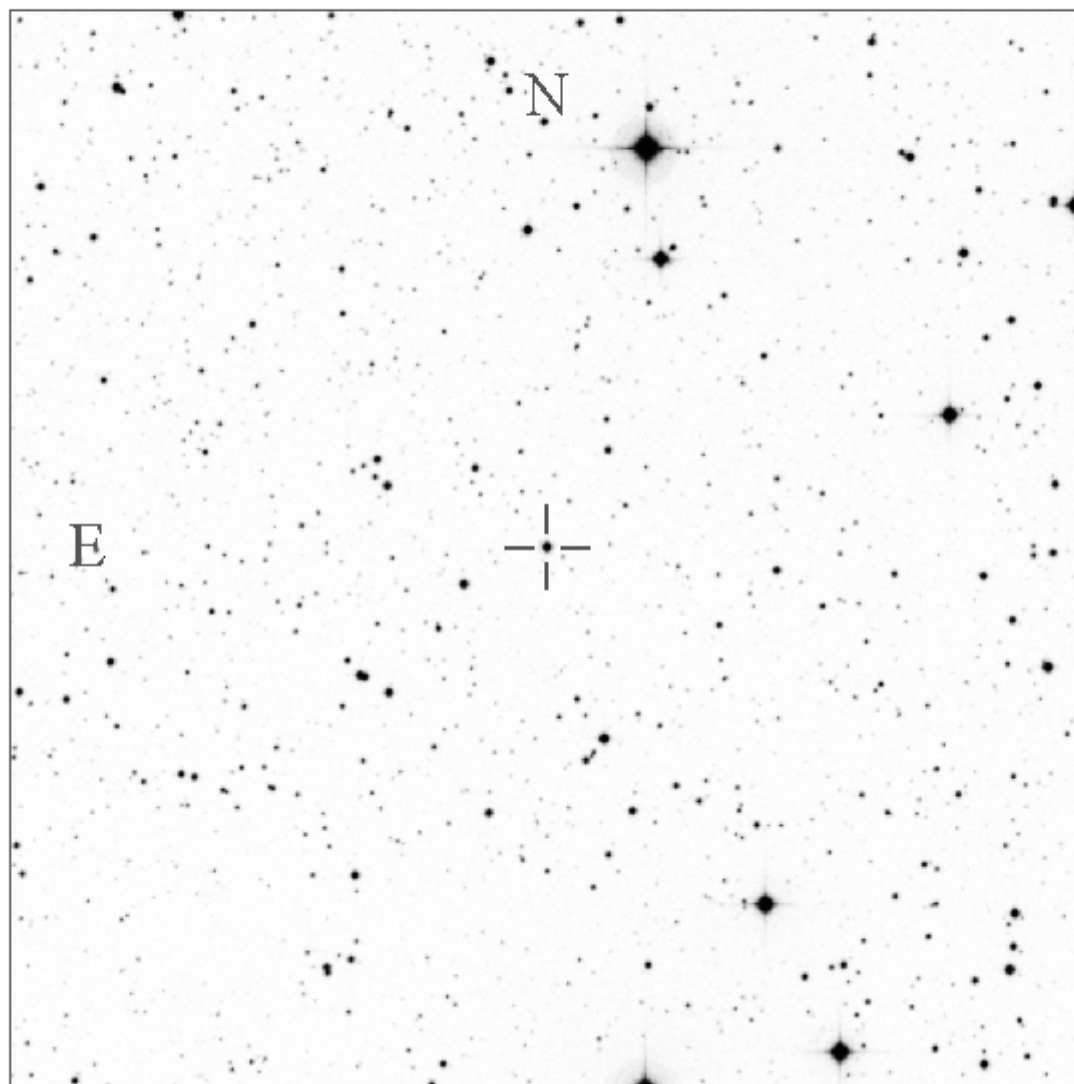
GSC2.2 N312200217126 is a new classical Cepheid according to ROTSE1 data, $M-m = 0.27 P$, $b = -1.3$ deg.

Light Curve



Finding Chart

GSC2.2 N3 122002 17126



Poss II red

15' x 15'